



PC10 Process Control Module

The V&N PC10 Process Control Module will modernize your manually operated deposition system with automatic deposition control. V&N will install this unit along with all of the necessary up-to-date control and sensor hardware to provide a fully interlocked “recipe” based automated process.

Benefits:

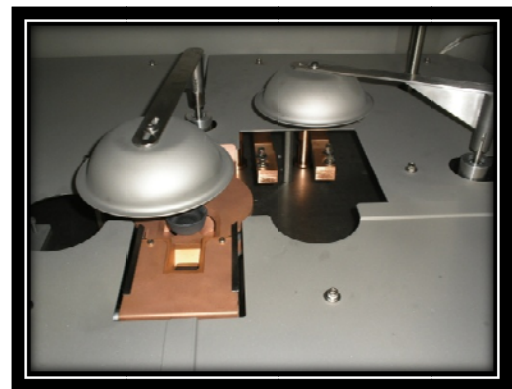
- **Reduced Labor Costs** – Automation allows multiple systems to be maintained by a single operator.
- **Increased Yield** – An automated deposition process can run during off hours or over the weekend without adding a shift.
- **Reduced Defects** – Automation insures repeatability and removes human factor from process control to eliminate mistakes.

Base Unit Provides:

- Control of one deposition source and shutter – e-beam or resistive
- Deposition Control – Rate, thickness and crystal life and for e-beam sources, sweep and pocket rotation
- Graphical User Interface on 19” touchscreen monitor for recipe development, editable material library, process status monitoring and trending
- Interlocks for vacuum level and water flow to sources and crystal (sensors included)

Options:

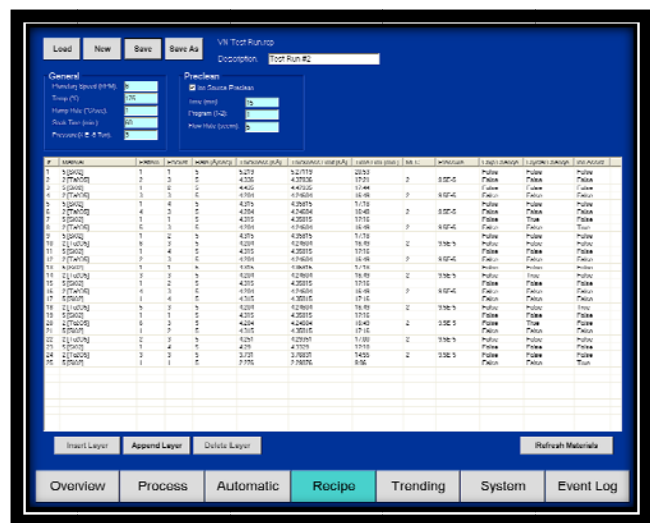
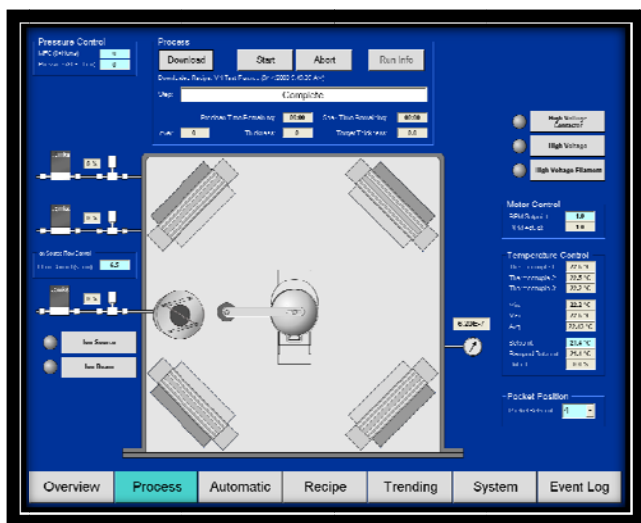
- Multi-Source Control
- Ion Source Control
- Process Heat Control
- Planetary Rotation Control
- Process Pressure Control
- Rotary 6-Crystal Head
- Data Logging
- Remote Monitoring / Network Ready





Process Module Benefits Comparison

Unit Features	V&N Process Module	Leading Deposition Controller
Deposition Source and Shutter Control	X	X
Deposition Rate and Thickness Calculation	X	X
Crystal Life Monitoring	X + Sensor Included	X
Recipe Creation and Editing	X	X
19" Touchscreen and Full Keyboard Interface for Recipe Editing	X	
Material Library	X	X
Nameable User Defined Materials	X	
E-gun Sweep Control	X	
E-gun Pocket Rotation Control	X	
Safe Vacuum Level Interlock	X + Sensor Included	
Cooling Water Flow Interlock	X + Sensor Included	
Shutter Assembly and Pneumatics for Source	X	
Installation and 1 Day Training	X	
Fully Upgradeable for Full System Automation	X	



User Interfaces Shown for Module with Optional Equipment